
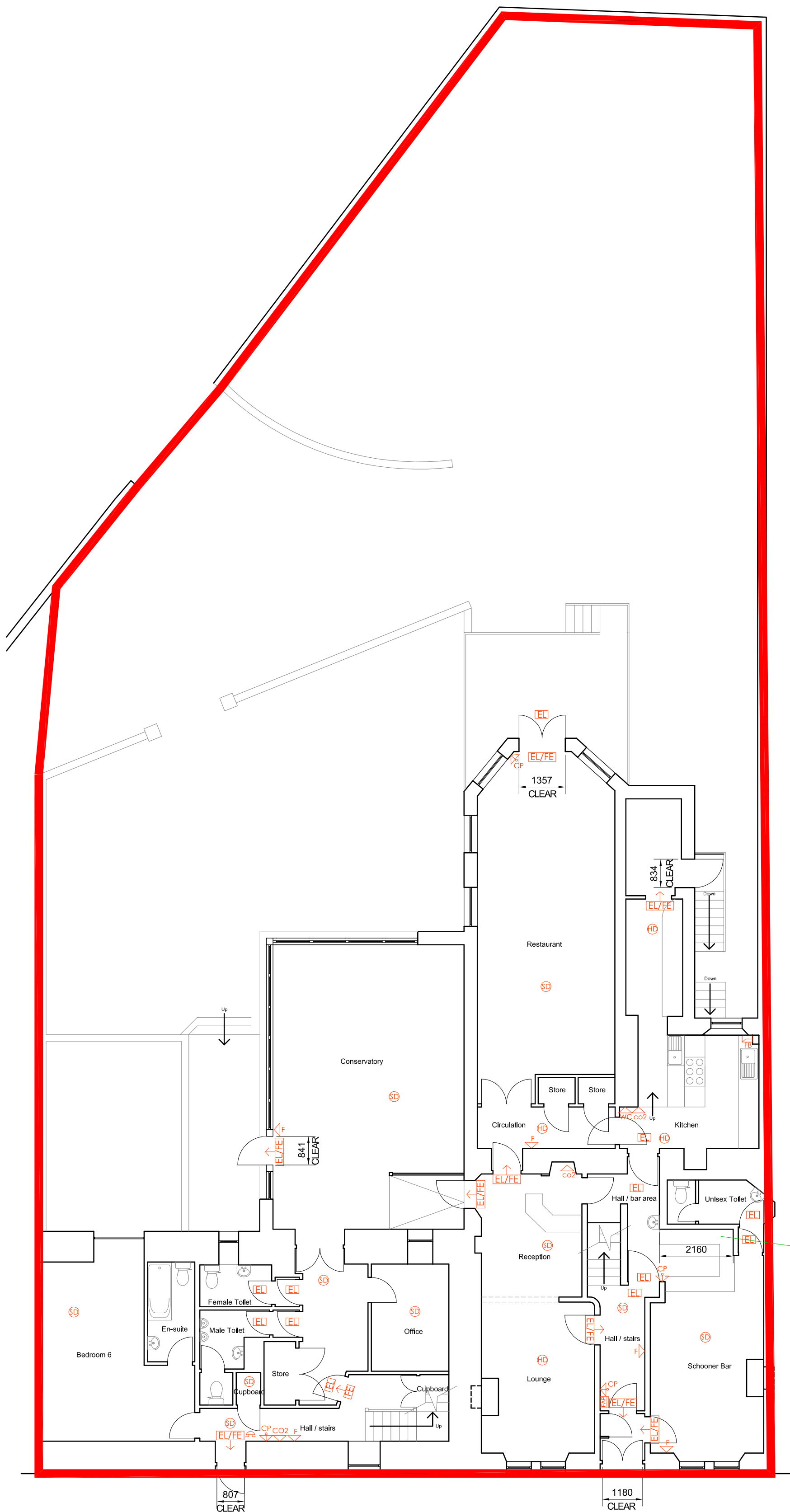


NOTES

- Children and young persons will have access to all parts with the exception of Schooner Bar
- All activities occur throughout

 Extent of the licensed premises including external area to rear of Harbour Inn

- LEGEND
-  Alarm Sounder
 -  Visual Sounder
 -  CP Call Point
 -  F Foam extinguisher
 -  CO2 CO2 Extinguisher
 -  W Water Extinguisher
 -  FB Fire Blanket
 -  FH Fire Hose
 -  SD Smoke Detector
 -  HD Heat Detector
 -  EL Emergency Lighting
 -  EL/FE Emergency light/Fire Exit
 -  FE Fire Exit Sign
 -  FE-> Directional Fire Exit Sign



Harbour Inn
Floor Plan as Proposed

Total Display Area - 4.86m²

ECD COMPUTER FILE
NOTES
1. Do not scale from this drawing. All dimensions to be checked by the Contractor before construction proceeds and prior to the fabrication of any component.

LEGEND

REVISION	DRAWN BY	CHECKED BY	DATE	DESCRIPTION
-	-	-	-	-

DRAWING ISSUE
INFORMATION
CLIENT
Beam Suntory Ltd
200 Carlisle Street, Glasgow, G21 1EQ

PROJECT TITLE
Harbour Inn
Licensing

DRAWING TITLE
Ground Floor

 **ECD Architects**
ENERGY CONSCIOUS DESIGN
Centrum Building, 38 Queen Street,
Glasgow G1 3DX
t: 0141 204 7855
e: ecda@ecda.co.uk
w: www.ecda.co.uk

SCALE	DRAWN
1:100 @ A2	SH
DATE	CHECKED
May '21	-
DWG NO.	REVISION
210016-ECD-V13-00-DR-A-07-1-001	-